



Vehicle History Report

VEHICLE DETAILS

Chassis number ¹: ZN6-027017

Manufacture date: 2013

Make: TOYOTA

Model: 86

Body: DBA-ZN6

Grade: GT

Engine: FA20

Drive: 2WD

Transmission: AT

Title information ²:  **Deregistered to Export** 

Accident / Repair:  **No problem** 

Odometer rollback:  **No problem** 

Manufacturer recall:  **No problem** 

Safety grade ³:  **★★★★** 

Contamination risk:  **No problem** 

This CAR VX Vehicle History Report is based only on Information supplied to CAR VX, LTD and available as of 2026-01-08 21:41:30. Other information about this vehicle, including problems, may not have been reported to CAR VX, LTD . Use this report as one important tool, along with a vehicle inspection and test drive, to make a better decision about your next used car.

ACCIDENT / REPAIR HISTORY

Problem type	Reported	Date reported	Data source	Details	Airbag
Collision	Not reported				
Malfunction	Not reported				
Theft	Not reported				
Fire damage	Not reported				
Water damage	Not reported				
Hail damage	Not reported				

ODOMETER READINGS HISTORY

Date reported	Data source	Odometer reading (Km)
2022-02-08	MLIT	43100
2024-02-02	MLIT	51900
2025-06-24	CAA Gifu	55757
2025-11-29	USS HAA Kobe	55791

USE HISTORY

Use in the contaminated regions ⁴	Radioactive contamination test fail ⁵	Commercial use
Not reported	Not reported	Not reported


DETAILED HISTORY

Event date	Location	Odometer reading (Km)	Data source	Details
2013			TOYOTA	Manufactured
2013-02			MLIT	First registration
2022-02-08		43100	MLIT	Inspection
2024-02-02	Fukuoka	51900	MLIT	Inspection

2025-06-24	Gifu	55757	CAA Gifu	Auctioned
2025-11-29		55791	USS HAA Kobe	Auctioned
2025-12-10	Fukuoka		MLIT	Last registration

MANUFACTURER RECALL HISTORY

Date reported	Data source	Affected part	Details
---------------	-------------	---------------	---------

 Not reported



VEHICLE ASSESSMENT ⁶

Overall Collision Safety Ratings

Driver's seat			Front passenger's seat		
Points	Evaluation	Goal average	Points	Evaluation	Goal average
10.27	★★★★★	86%	10.16	★★★★★	85%

* In order to accurately differentiate between the evaluations of different vehicles, a standard is set based on current technology. Up to 6 points out of 12 is given level 1 and the rest of the range is divided up into equal parts, which are respectively assigned to level 2 (more than 6 points but 7.5 or less), level 3 (more than 7.5 points but 9 or less), level 4 (more than 9 points but 10.5 or less) or level 5 (more than 10.5 points).

Braking performance tests ⁷

Dry road		39.6 m
Wet road		41.0 m

VEHICLE SPECIFICATION

1st gear ratio	3.538	2nd gear ratio	2.060
3rd gear ratio	1.404	4th gear ratio	1.000
5th gear ratio	0.713	6th gear ratio	0.582
Additional notes	-	Airbag position, capacity	

Body rear overhang	755 (REAR SPOILER HAVE) 750 (REAR SPOILER LESS)	Body type	COUPE
Chassis number embossing position	CROSSMEMBER FRONT RIGHT SIDE FRONT SURFACE	Classification code	1009
Cylinders	4	Displacement	1990
Electric engine type	-	Electric engine maximum output	-
Electric engine maximum torque	-	Electric engine power	-
Engine maximum power	147/7000(NET)	Engine maximum torque	205/6400-6600(NET)
Engine model	FA20	Frame type	FRAME LESS
Front shaft weight	710	Front shock absorber type	
Front stabilizer type	TORSION· BAR TYPE	Front tires size	215/45R17 87W
Front tread	1.520	Fuel consumption	-
Fuel tank equipment	50	Grade	GT
Height	1.300	Length	4.240
Main brakes type	HYDRAULIC TYPE FRONT DISK BACK DISK	Make	TOYOTA
Maximum speed	180	Minimum ground clearance	0.130
Minimum turning radius	5.4	Model	86
Model code	DBA-ZN6	Mufflers number	
Rear shaft weight	540	Rear shock absorber type	
Rear stabilizer type	TORSION· BAR TYPE	Rear tires size	215/45R17 87W
Rear tread	1.540	Reverse ratio	3.168
Riding capacity	4	Side brakes type	
Specification code	17116	Stopping distance	☆7.72(100)
Transmission type	AT	Weight	1250

Wheel alignment	2WD	Wheelbase	2.570
Width	1.775		

AUCTION DATA

Date: 2025-06-24, Auction: CAA Gifu, Lot #: 30195

Date:	2025-06-24	Lot #:	30195
Auction name:	CAA Gifu	Region:	Gifu
Make:	TOYOTA	Model:	86
Reg. year:	2013	Mileage (km):	55757
Displacement (cc):	2000	Transmission:	FAT
Color:	SILVER	Model code:	ZN6
Result:	sold	Auction grade:	4.5
Problem type:	No problem	Problem scale:	None
Contaminated:	No	Airbag:	OK

Date: 2025-11-29, Auction: USS HAA Kobe, Lot #: 1

Date:	2025-11-29	Lot #:	1
Auction name:	USS HAA Kobe	Region:	
Make:	TOYOTA	Model:	86
Reg. year:	2013	Mileage (km):	55791
Displacement (cc):	2000	Transmission:	FA
Color:	SILVER	Model code:	ZN6
Result:	available	Auction grade:	4
Problem type:	No problem	Problem scale:	None
Contaminated:	No	Airbag:	OK

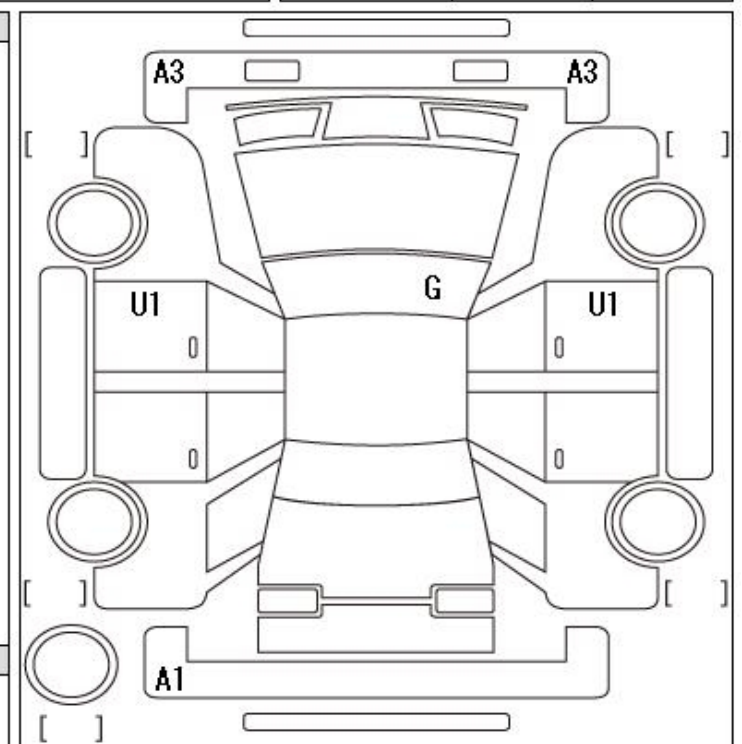
PHOTOS AND AUCTION SHEETS

出品番号	初度登録	車名	ドア形状	グレード	評価点
30195 初出品	H25年	86	2CP	GT	4.5
	2月	自家用	2000cc	ガソリン	DBA-ZN6
	車歴	排気量	燃料	型式	外装 内装
					B C

走行	車検	登録番号	譲渡書類期限	セールスポイント	
55,757 km	08年02月	名古屋 304H4115	月 日	★純正ナビ・TV ★プッシュスタート ★パドルシフト	
シフト	エアコン	外装色	乗車定員	最大積載量	
FAT	AAC	シルバー	人	kg	
		カラーNo.	輸入車	リサイクル預託金	
		D6S	系	10,180円	
後日発送部品				純正装備	
保証書 車両取説				北ナビ TV 17B 17C PS PW	

注意事項欄			車台番号		
ナビSD・B-CAS後日			ZN6-027017		
			諸元		
長さ		幅	高さ		

検査員記入欄
シート切れ・破れ小、すれ ハンドルすれ 外装小傷有り エンジンチェックランプ点灯 横滑り防止ランプ点灯 エンジン振動有
事務局よりご案内

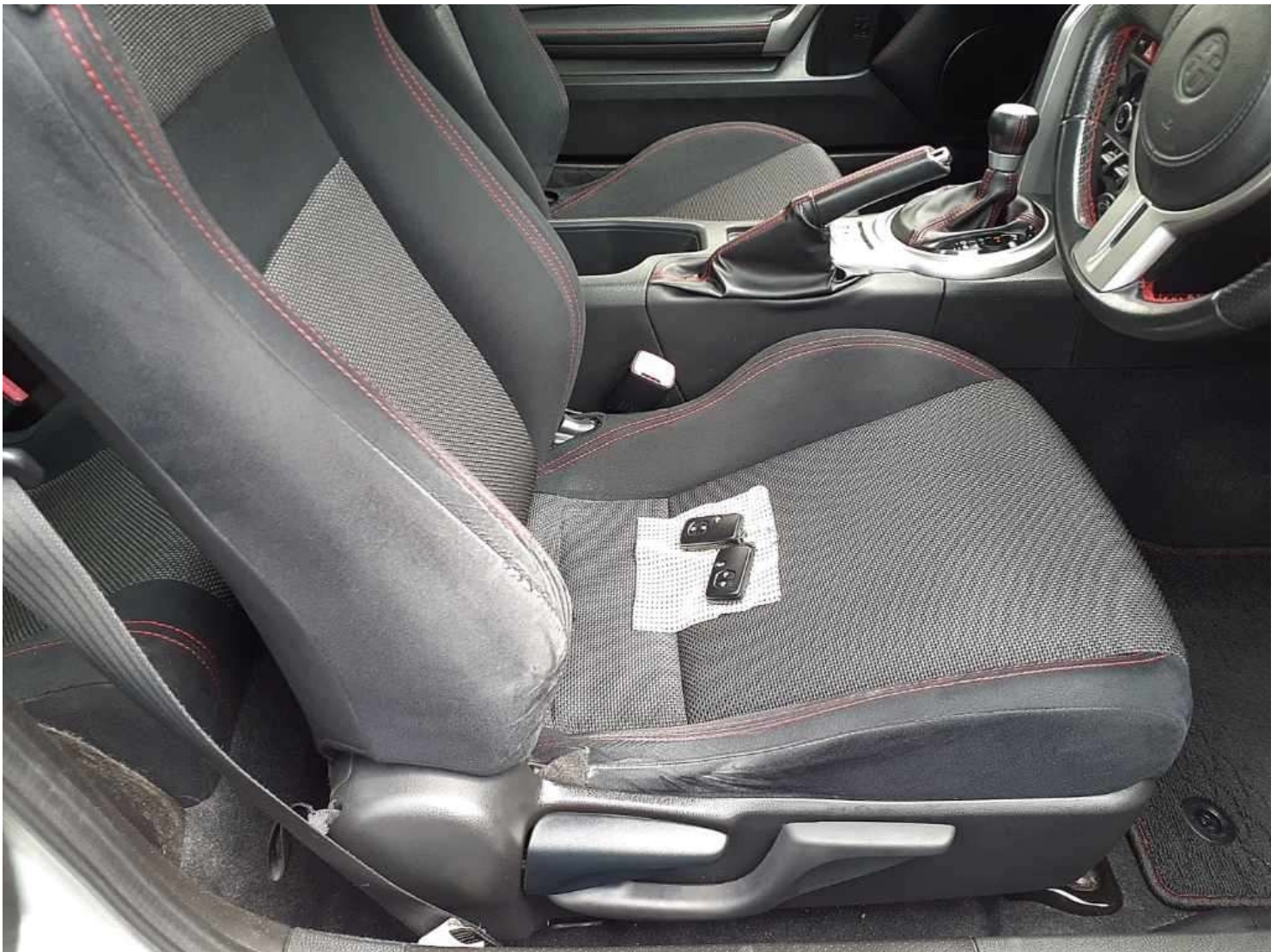


A:キズ U:欠陥 B:キズを伴う欠陥 P:要塗装 W:補修箇所 S:錆 C:腐食、穴 G:ボディパッド点検キズ XX:交換済み X:要交換 欠:欠品 内・外装評価 5段階5段階順(A・B・C・D・E) 1

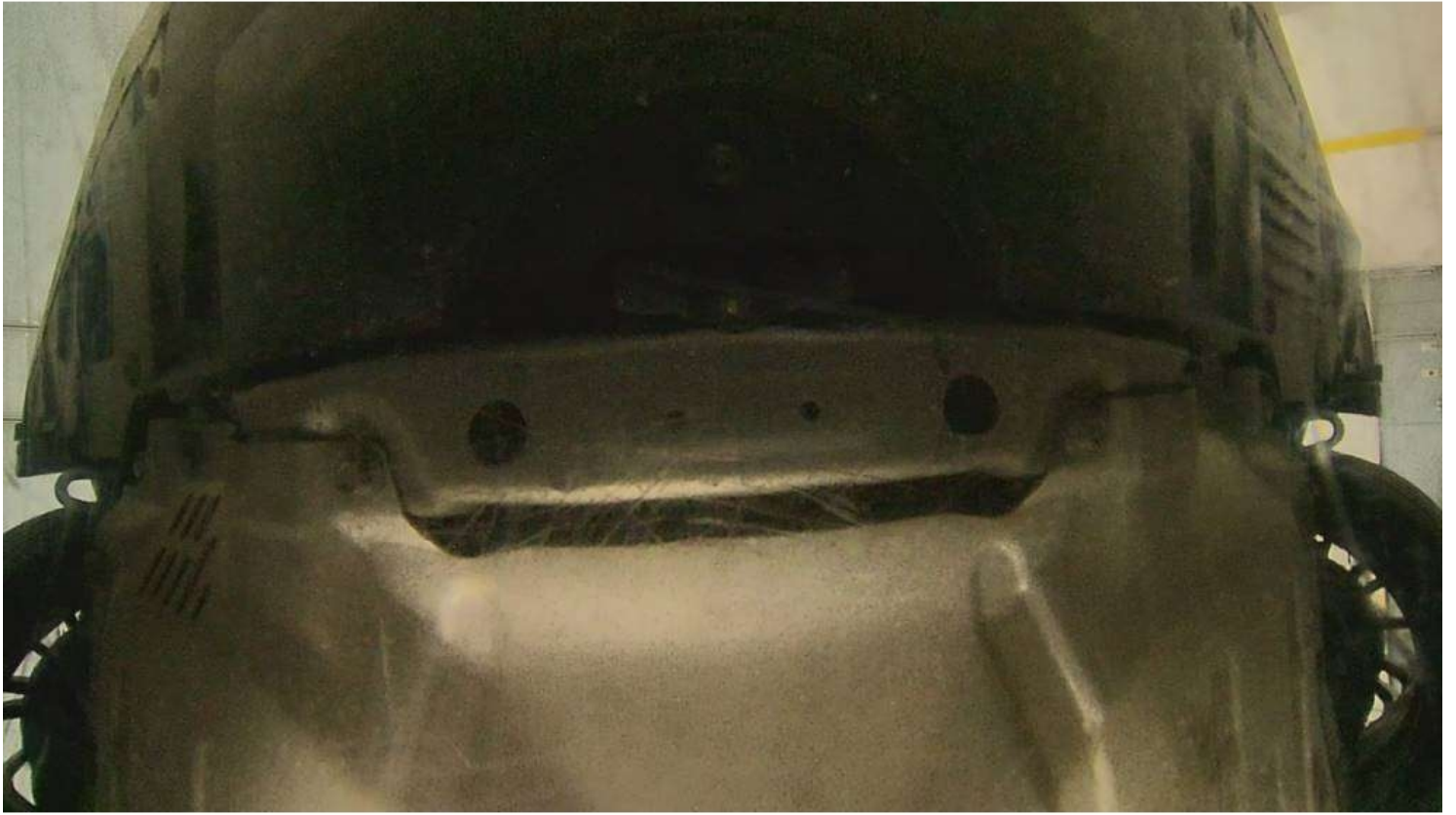












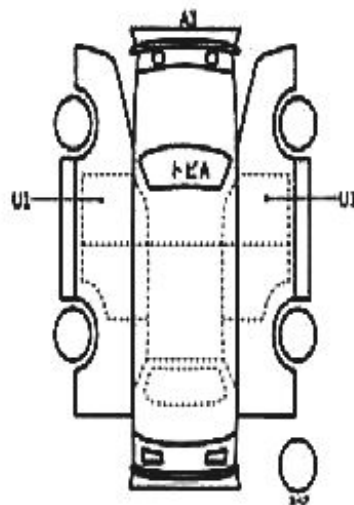


HAAファーストコーナー

1	車種 (国産車以外は輸入車)	年式	型式	登録年
		2000	DBA-ZN6	4
	初年度登録年月	車名	グレード	登録
	H25/2月	トヨタ 86	CP GT	ZND
				内装 色別
				B
車検	R8年 2月 13日	シフト	FAT	特 種 車
走行	55,791 km	冷 機	AAC	(SA) (P) (PS) (P) カワ IV ナビ (エアロ)
外 色	色別 シルバー	カラー 名	D6S	セールスポイント
燃 料	ガソリン	内装 色別	ブラック系	スペアキー
車 種	輸入車	ハンドル	ハンド	キーレス
				プッシュスタート
				SDカード後付
リサイクル 料別	10,180円	乗車 人数	4人	登録地
○注意事項 (印字・不具合箇所をふりかき)				和歌 301 枠 2299
				車台号
				ZN6-027017
				シリアル号

○検査員検査

- シートフチスレ、切れ
- ルーム内一部キズ汚れ
- ホイールキズ
- 小キズ小凹



[検定内寸] 長	X	X	(cm)
長さ	424 cm	幅 177 cm	高さ 130 cm

¹ Chassis number – a unique identification number of the vehicle in Japan (same as VIN in the USA or Europe)

² Title information:

Registered – qualified for driving in Japan

Deregistered Temporarily – not qualified for driving in Japan, usually a temporary title during the ownership change

Deregistered Completely – not qualified for driving in Japan, the vehicle is determined to be scrapped

Deregistered to Export – not qualified for driving in Japan, the vehicle is determined to be exported

³ Determining the overall collision safety performance evaluation – For the driver's seat, the results of the full-wrap frontal collision test, offset frontal collision test, and side collision test are added together and evaluated to 6 different levels. For the Frontal passenger's seat, the results of the full-wrap frontal collision test and the side collision test (results for the driver's or the front passenger's seat are used) are added together and evaluated to 6 different levels.

Regular vehicle inspection – All vehicles in Japan must undergo regular vehicle inspections (shaken). New cars need to be tested after three years, and then vehicles must be tested every two years thereafter. A vehicle inspection (shaken) is compulsory for all vehicles with an engine size over 250cc. It ensures that all vehicles on the road are properly maintained and safe to drive. The test also checks that vehicles have not been illegally modified; if they are found to have been modified, they are not allowed on the road.

⁴ Use in the contaminated regions – The Fukushima Daiichi nuclear disaster was a catastrophic failure at the Fukushima I Nuclear Power Plant on 11 March 2011, resulting in a meltdown of three of the plant's six nuclear reactors. As a result, some areas in the following prefectures were contaminated: Fukushima, Miyagi, Ibaraki, Tochigi.

⁵ Radioactive contamination test – radioactive contamination inspection that was started in July 2011 as a preventive measure for exporting contaminated vehicles from Japan. The inspection is being conducted since in all sea ports of Japan under the supervision of The Japan Harbor Transportation Association (JHTA).

MLIT – Ministry of Land, Infrastructure, Transport and Tourism.

⁶ Japan New Car Assessment Program – the Ministry of Land, Infrastructure, Transport and Tourism (MLIT) and the National Agency for Automotive Safety & Victims' Aid (NASVA) have taken measures for safety, one of which is to assess commercially available vehicles through a variety of safety performance tests and release the resulting information compiled into the "New Car Assessment Program". The objective of Japan New Car Assessment Program is to increase the use of safe automobiles by providing an environment in which users can easily select such vehicles. This also promotes the development of safer vehicles by automobile manufacturers. Neck injury protection for rear-end collision performance test, rear seat passenger's protection for frontal collision performance test, rear passenger's seat belt usability evaluation test and seat belt reminder for passengers evaluation test are started in FY2009.

⁷ Braking Performance Tests – Braking performance is determined by the shortness of the distance in which a vehicle can stop and the stability of the vehicle at the time of braking. This test is performed under wet and dry road conditions for a vehicle which has both a driver and a front passenger. The distance it takes for the vehicle to stop and the stability of the vehicle at the time of braking is evaluated for when the vehicle is stopped abruptly while traveling at a speed of 100km/h. The stopping distance and vehicle speed have been measured by using GPS since FY2009.

CAR VX, LTD DEPENDS ON ITS SOURCES FOR THE ACCURACY AND RELIABILITY OF ITS INFORMATION. THEREFORE, NO RESPONSIBILITY IS ASSUMED BY CAR VX, LTD OR ITS AGENTS FOR ERRORS OR OMISSIONS IN THIS REPORT. CAR VX, LTD FURTHER EXPRESSLY DISCLAIMS ALL WARRANTIES, EXPRESSED OR IMPLIED, INCLUDING ANY IMPLIED WARRANTIES OF MERCHANTABILITY OR FITNESS FOR A PARTICULAR PURPOSE.

© 2014-2026 Car VX Limited. All rights reserved.